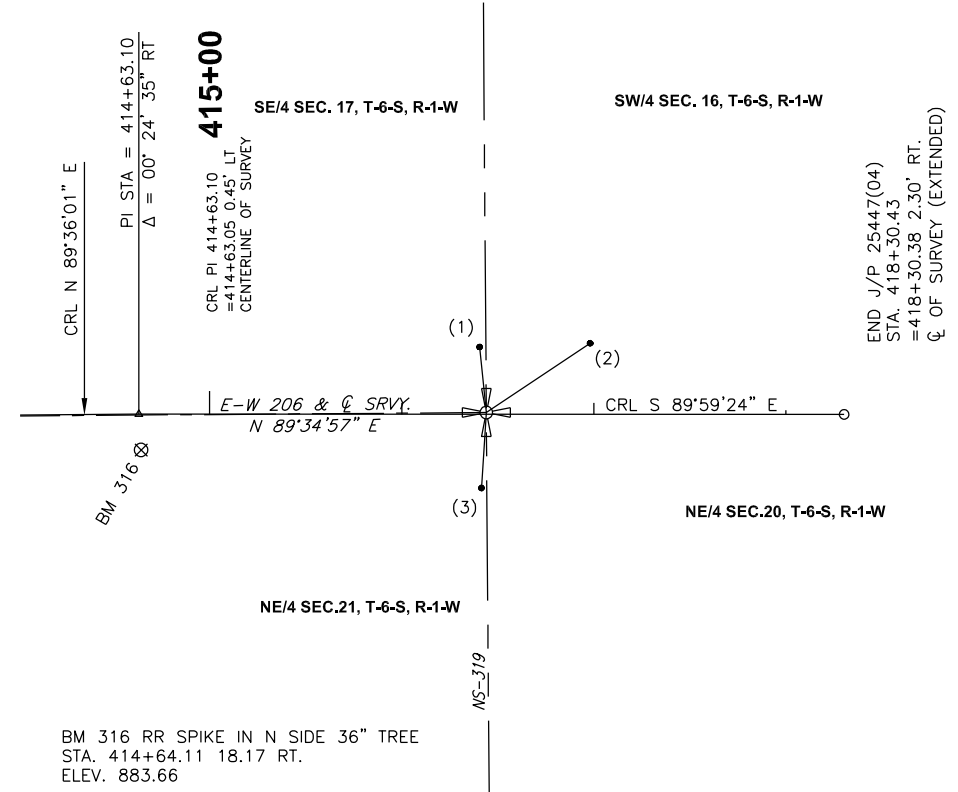


BM 280 RR SPIKE N FACE 24" TREE S SIDE ROAD
 STA. 401+05.18 60.40 RT.
 ELEV. 881.29

BM 315 RR SPIKE IN S SIDE PP
 STA. 408+21.64 35.13 LT.
 ELEV. 886.88



BM 316 RR SPIKE IN N SIDE 36" TREE
 STA. 414+64.11 18.17 RT.
 ELEV. 883.66

BM 281 RR SPIKE IN N FACE COR POST
 STA. 422+63.46 46.01' RT.
 ELEV. 897.07

CENTERLINE OF SURVEY ALIGNMENT				
PI STATION	NORTHING	EASTING	DISTANCE	DIRECTION
100+00.00	253,136.00'	2,143,657.72'	2,644.64'	N89° 44' 05"E
126+44.64	253,148.25'	2,146,302.33'	2,643.57'	N89° 40' 28"E
152+88.22	253,163.27'	2,148,945.86'	2,638.11'	N89° 36' 57"E
179+26.33	253,180.95'	2,151,583.92'	2,638.11'	N89° 37' 00"E
205+64.44	253,198.60'	2,154,221.97'	2,653.57'	N89° 11' 54"E
232+18.01	253,235.73'	2,156,875.28'	2,653.57'	N89° 11' 54"E
258+71.58	253,272.86'	2,159,528.59'	2,644.28'	S89° 57' 22"E
285+15.86	253,270.83'	2,162,172.87'	2,647.26'	S89° 48' 45"E
311+63.12	253,262.16'	2,164,820.12'	2,543.64'	N89° 37' 33"E
337+06.76	253,278.78'	2,167,363.70'	2,654.71'	N89° 37' 54"E
363+61.47	253,295.84'	2,170,018.36'	2,641.24'	N89° 34' 52"E
390+02.71	253,315.15'	2,172,659.53'	2,641.30'	N89° 34' 57"E
416+44.02	253,334.40'	2,175,300.76'		

CRL ALIGNMENT				
PI STATION	NORTHING	EASTING	DISTANCE	DIRECTION
100+15.00	253,122.98'	2,143,672.81'	626.81'	N89° 53' 17"E
106+41.81	253,124.20'	2,144,299.61'	2,358.20'	N89° 27' 15"E
130+00.01	253,146.67'	2,146,657.71'	2,809.89'	N89° 47' 27"E
158+09.90	253,156.92'	2,149,467.58'	2,206.40'	N89° 31' 07"E
180+16.30	253,175.46'	2,151,673.90'	800.00'	N89° 36' 23"E
188+16.30	253,180.95'	2,152,473.88'	1,717.05'	N89° 29' 56"E
205+33.35	253,195.97'	2,154,190.86'	1,269.44'	N89° 30' 31"E
218+02.79	253,206.86'	2,155,460.26'	897.28'	N89° 53' 15"E
227+00.07	253,208.62'	2,156,357.54'	1,837.73'	N89° 00' 39"E
245+37.80	253,240.34'	2,158,194.99'	1,365.51'	N89° 08' 55"E
259+03.31	253,260.64'	2,159,560.35'	1,296.74'	N89° 19' 02"E
272+00.05	253,276.09'	2,160,857.01'	1,088.25'	S89° 49' 00"E
282+88.30	253,272.61'	2,161,945.25'	1,099.13'	S89° 57' 33"E
293+87.43	253,271.82'	2,163,044.38'	1,160.44'	S89° 55' 04"E
305+47.87	253,270.16'	2,164,204.81'	1,805.06'	S89° 53' 46"E
323+52.93	253,266.88'	2,166,009.87'	2,643.28'	N89° 35' 49"E
349+96.21	253,285.47'	2,168,653.09'	3,875.94'	N89° 34' 44"E
388+72.15	253,313.96'	2,172,528.92'	751.42'	N89° 34' 06"E
396+23.57	253,319.62'	2,173,280.32'	754.76'	N89° 31' 07"E
403+78.33	253,325.96'	2,174,035.05'	1,084.77'	N89° 36' 01"E
414+63.10	253,333.52'	2,175,119.80'	367.33'	S89° 59' 24"E
418+30.43	253,333.46'	2,175,487.13'		